



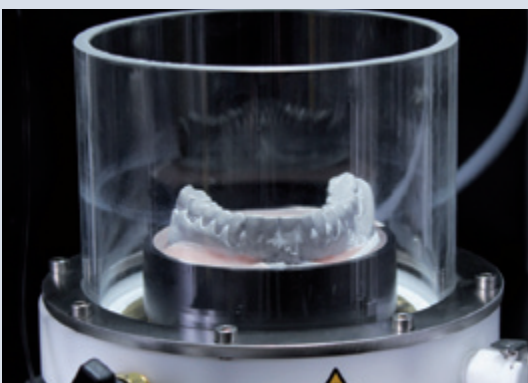
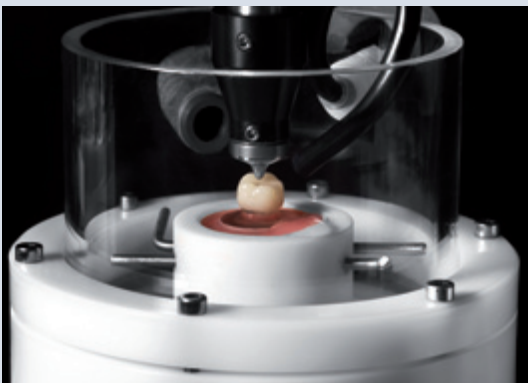
WE TEST YOUR SPECIMEN

- PROMPT SERVICE
- RELIABLE
- AFFORDABLE

TESTING SERVICES

OUR SERVICE FOR YOUR R&D

- CHEWING SIMULATION
- THERMOCYCLING
- MICROTENSILE
- SHEAR-BOND-STRENGTH
- TOOTHBRUSH SIMULATION ACCORDING ISO/TR 14569-1
- DYNAMICAL FATIGUE TESTING OF IMPLANTS ACCORDING TO EN ISO 14801
- TESTING OF CERAMICS ACCORDING TO EN ISO 6872
- ABRASION VOLUME DETERMINATION



KEY FEATURES

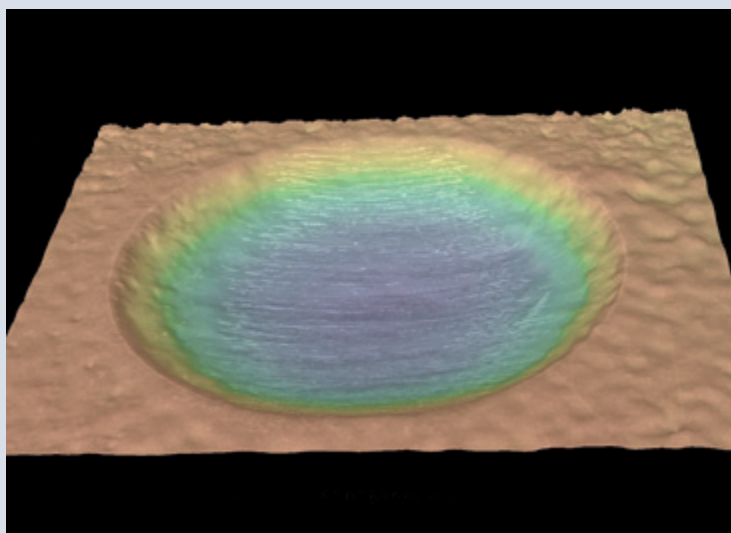
- All testing procedures meet today's standards of dental material testing
- Identical devices used by universities thus results are comparable
- Extensive experience in dental material testing
- Preparation and consultation to find the best test scenario for your specimen

ADVANTAGES

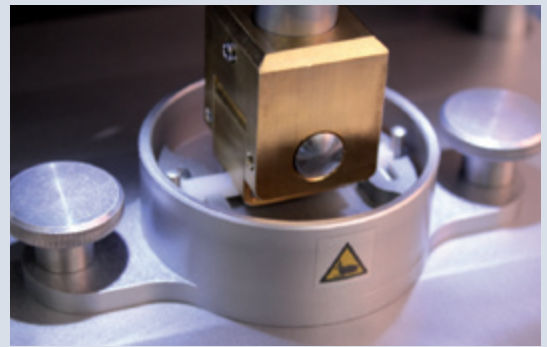
- No costs of capital, operating, personnel or maintenance
- High availability of testing devices
- Large amounts of samples can be tested in a short period of time with multiple devices
- Testing at a fixed price
- Benefit from our experience as a manufacturer and user of testing devices
- Daily inspection of specimen
- Immediate notification on incidents
- Complete test report after testing including pictures, videos and detailed testing protocol

ADDITIONAL SERVICES

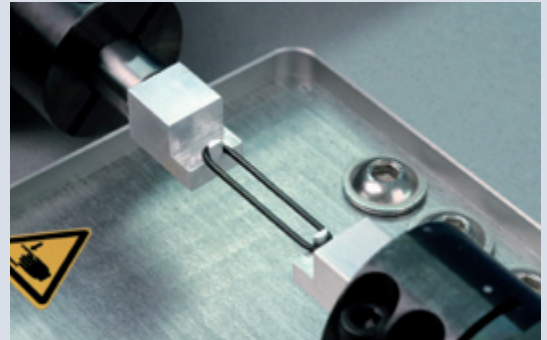
- Individual test set-up
- Specimen embedding in our laboratory
- Manufacturing of individual jigs for special specimen and antagonists
- Optical abrasion analysis with volume loss calculation



Precise optical surface analysis



Dynamic testing



Microtensile



Thermocycling



Toothbrush simulation

SD MECHATRONIK GMBH
Miesbacher Str. 34 · 83620 Feldkirchen-Westerham · GERMANY
Phone +49 8063 207 4593 · Fax. +49 8063 207 4594
e-mail: info@sdm-gmbh.de · web: www.sdm-gmbh.de


SD Mechatronik
Dental Material Testing Systems